

A decorative border of various tropical plants and flowers, including monstera leaves, bird of paradise flowers, and palm fronds, framing the central text.

# **Hawaii Magic Skies Farmstay Guest Book**

**Call or Text Josh  
(808) 238-1191**

# Breakfast Option:

Each guest floor consists of a full kitchen if you wish to do your own breakfast, you are welcome to do that. We have farm fresh eggs available \$8 a dozen and ground pork 2 lbs for \$8.

If you would rather have breakfast provided to you, the cost is \$15 per adult, \$10 for children. Room service is \$10. Let me know the night prior by filling out the form at <https://hawaiimagicskies.com/breakfast-order-form/> or texting Josh at (808) 238-1191 that you would like breakfast and which selections. It will be served on your floor at 8:30 a.m.

We are a farm, so if available, we will be serving items from our farm: fresh eggs, bacon, sausage, and in season fruit.

## Choose from:

- 2 farm fresh eggs any style, bacon, ham or sausage, hashbrowns, toast, coffee or juice (style options: scrambled, over easy, over medium, poached, sunny side up)
- Spanish omelette, hashbrowns, toast, coffee or juice
- 2 hard boiled eggs, hashbrowns, toast, coffee or juice
- Oatmeal and fruit, coffee or juice
- French toast, bacon, ham or sausage, hashbrowns, toast, coffee or juice
- Cold cereal and fruit, coffee or juice
  - Shredded wheat
  - Frosted shredded wheat
  - Fruit loops
  - Kashi Go Lean
  - Life

**Host Josh**  
**(808) 238-1191**

# Add Ons:

## Activities

- **Guided day tour** around the island sites, 4 hours max, 4 guests max  
\$500 per group
- **Ride in Mule ATV** down to the creek bed ravine if access is available. Enjoy the jungle atmosphere, soothing flowing water, and view the prawns!  
\$20 per person
- **Ride in the Mule ATV** to top of Puia Road. Views of Hilo bay and the ocean. See cows along the way!  
\$20 per person
- **Breakfast** cooked to order and served on your floor upon request; Menu of available items Eggs and toast Hashbrowns Bacon or Sausage, Fresh fruit, Oatmeal, Cereal, Hard boiled eggs, Coffee or tea or Juice (see more options on the Breakfast option sheet or on our website [hawaiimagicskies.com/breakfast-order-form/](http://hawaiimagicskies.com/breakfast-order-form/)).  
\$15 per serving for adults, \$10 for children
- **Room Service** Have your breakfast delivered to your room!  
\$10
- **Champagne** delivered to your room with glasses.  
\$35 bottle

## From the Farm

- Farm fresh eggs  
\$8 a dozen or \$11 for 18 pack
- Super lean farm fresh ground beef or stew meat  
\$15 for 2 lb package
- Farm fresh beef steak, round or chuck  
\$7 per lb
- Farm fresh beef steak, other cuts (serloin, ribeye, etc)  
\$10 per lb
- Farm fresh ground pork  
\$10 for 2 lb package
- Farm fresh lamb, various cuts  
\$12 per lb

**Text Host Josh to request (808) 238-1191**

# Hawaii Magic Skies Guest Book

**Welcome to Magic Skies!** We are so happy to have you stay with us in this magical place! We absolutely love it here and love sharing it with you! This island has so much to see and do with different eco systems everywhere you explore. We are on the green and lush side which also means the wettest, but rain usually comes at night or in the morning, you can usually find plenty of time to explore. The winter does bring more rain but it's still warm. Temps range from 65-90 degrees Fahrenheit year-round. Umbrellas are available on the mud room bench between the house and the garage.

We have a guide book in the pages to follow with our favorite places to explore on the island as well as our favorite places to eat. Guided tours available upon request for an additional fee. Breakfast is optional for an additional fee. See the Breakfast options in this book.

We are your hosts, Kevin and Sue Strauslin. Our living quarters are at the basement level so you have your privacy, but we are here if you need anything, just call or text. We hope you enjoy your stay with us. If you need anything or have questions, just ask, we want to make sure your stay is comfortable and welcoming. Please enjoy your stay!

Guest rooms have access to main areas on the same floor, consisting of full kitchen, dining, laundry, living room and lanais. There is a game room on the top floor with pool table, ping pong, games, puzzles which you may also use. If you are on the main level, the stair case going up is by the bedroom hall or use the outside staircase up. Watch your step!

## **House Rules and Accommodation Information**

### **Rules:**

The house is made of teak and sound travels even though its well-insulated. Step lightly and close doors softly.

There is a bench/mud room area behind garage to store shoes if they are muddy or make a lot of noise.

Shoes are ok in the house if they are quiet, if not, take them off at the door or at the bench.

In bedrooms, consider those below you, no exercising or dancing in the bedrooms after 8 p.m. because those below you will hear you and some like to go to bed early.

Come with Aloha, with kindness and respect of other guests.

Do not enter areas marked with "Beware of the Dog" signs or animal pens.

No parties unless approved.

No burning candles unless fully contained and monitored.

No glitter (we've had scattered glitter incidents, lol).

Quiet time after 10 pm. Try to respect the peace and tranquility of this place and the enjoyment of others.

No illegal activity. We are 420 friendly.

No extra guests not on the reservation.

No hanky-panky in hot tub.;)

### **Parking and Entry:**

Use the code to enter the property. When leaving, pull up to the gate, stopping at the drain, not too close but close enough, the gate will open. If walking out, there is a button on the left side of the gate. Parking is available for guests at the back of the property. Follow the driveway to circle drive. Park in front of garages, entryway or to the side of the circle drive. Entry is to the left of the 3 car garages.

### **Building Entrance:**

The Entries for the building are located in the back. Follow the driveway to circle drive. Entry is to the left of the 3 car garages.

# Hawaii Magic Skies Guest Book

## **The Rooms:**

The guest rooms are on the top two floors. There are 3 rooms on each floor which all share the living spaces on that floor. Only use the bathroom assigned to you, either your en-suite bathroom, or your dedicated bathroom. Enter using either your private entrance or the main double doors in the center of the entrance on the floor your room is located on. The key to your room is on the dresser in your room.

**Top Floor:** Under the Sea Room – Enter through double doors, go left down hall to end.  
Waterfall Botanical Room – Enter through private sliding door entrance to left on lanai or through main double doors, go left down hall, first door on left.  
Hawaiian Kingdom room – Enter through private sliding door entrance to right on lanai or through double doors, go right, through kitchen, door to right of game room

**Main Floor:** Turtle Room – Enter through double doors, go left down hall to end.  
Koi Pond Room – Enter through private sliding door entrance to left on lanai or through main double doors, go left down hall, first door on left.  
Surfs Up Room – Enter through double doors, or through double doors, go right, through kitchen, door between counter and hall.

## **Breakfast and Meals:**

Since we do have farm fresh eggs, we have eggs available for purchase. With access to a full kitchen, you are welcome to cook and prepare your own meals during your stay with what we have stocked. Just clean up after. Prepared breakfast is an option to order and have it prepared and served for you for an additional fee of \$15 per guest per day. The rooms also have a mini frig, microwave, and coffee maker in them.

## **Doors and Screens:**

Windows have screens for your comfort. To minimize bugs entering the home, keep the double doors and slider screens closed. Especially in April and May, as termite swarms can happen during these months at dark when the warmth and moisture levels are just right, and they will fill the house if the doors are open. They are attracted to the light. This usually only happens a few times in spring but you will be shocked when it happens! Also keep windows closed when it's raining to keep rain from entering. Sometimes it's horizontal rain.

## **Wi-Fi:**

There are resin placards in the rooms with a QR code you can scan with your phone.

## **TV:**

TV and remotes are provided in the rooms and main areas. All TVs operates with streaming only. Live TV is on the Fubo app, and there are other apps available on smart TVs. We have accounts for Fubo, Netflix, AmazonPrime and Peacock, use the "guest" profile on apps unless you use your own login. If you use your own accounts be sure to log out when your check out.

## **Housekeeping:**

During your stay, you will be expected to clean sheets and towels as needed in the washer and dryer on your floor. No need upon check-out however, we will take care of that. Bring any dirty dishes to the kitchen, take out your trash and recyclables, and keep the place clean, unless you request this service for an additional fee. Trash dumpster and recycle bins are located by garage.

# Hawaii Magic Skies Guest Book

## **Air Conditioning:**

Thermostats for mini-split A/Cs are on wall in rooms and main areas and should be pre-set for a comfortable setting. Please don't switch to heat, that is not needed in this temperate climate, and could cause the units in other rooms to stop functioning. Don't adjust the temperature, rather turn it on or off. It should be set to a comfortable setting. Keep doors and windows closed when A/C is operating. To turn on or off you might need to take it out of the holder and point directly at the unit. It will beep and doors on the wall unit will open when it receives the setting.

## **Safety:**

We have surveillance cameras on perimeter of property exterior in outside areas for the safety of us and our guests. We do not have any cameras inside.

Be aware we have a gate alarm that we hear every time someone comes and goes. This is for our and our guest's protection as well as notifying us of business activity. If you plan to go out of the gate after 10, please let us know in advance so we know its you when we hear it.

Round door knobs are locked when the lever is horizontal.

Please don't lock the main doors as other guests will need access to the floor.

The double doors have a lock on the bottom of one to keep it closed in the jam. To open both, slide up on lock. To lock, slide it down.

Fire Extinguishers are in the bedrooms and kitchen.

Smoke and carbon monoxide detectors are located throughout the house.

In case of emergency call 911 and Josh 808-238-1191

You are welcome to use the Spa **at your own risk.**

## **Common Areas:**

You may use the main areas on your floor, Kitchen, Dining Room, Laundry, Living Room. Feel free to use the Lanais and Game Room on top floor during your stay. If you need something, just ask.

## **Spa/Hot Tub (available any time between 8:00 am and 10:00 pm):**

Spa is available for your use and is located at ground level on the ocean side of the house. Let us know when you want to use it so we can keep the dogs in. To take off cover, fold toward and over the cover lifter and then up and then the cover lifter holds it up. Please cover spa back up when you are done. Controls are on the top of spa on the side by step. There are two different pumps, pump 1 and pump 2. Both Pumps have 2 speeds. We keep the temperature at 95 degrees as we find this is the most comfortable for us with the higher humidity. Adjust as needed, but adjust back down when you are done. Towels are available for your use. Please cover the spa when done. We use the spa in the mornings from 6 a.m. –8 a.m. Best time for guest use is outside those hours.

## **Beach, Snorkel and Surf Gear:**

We have beach towels, snorkel gear, extra bathing suits, surf boards and chairs available on the main entry in the breeze way between the garage and house in the blue bin. **Use at your own risk.**

## **Outside Spaces:**

You are free to use all outside spaces, lanais and pond area **except our private yard where the dogs are.** Feel free to visit the animals, just stay outside their pens or watch the animals from your lanai.

**Do not enter areas marked with "Beware of the Dog" signs or go through gates where the animals are.**

# Hawaii Magic Skies Guest Book

## **Animals:**

No guest animals are allowed.

Our dogs, Huckleberry and Sheila, do bark a lot when they don't know people, but they warm up quickly. They have their own dog run and should not be present in the guest areas at all. Their area connects to our living quarters on the basement level. If you use the spa, let us know before so we can keep them in our quarters while you use it. When we go to bed huckleberry goes a little nuts with barking and grunting but it's just when we let them out before bed. They are in with us after that time.

**Do not enter areas marked with "Beware of the Dog" signs.**

We have 3 cats that are indoor/outdoor and keep control of the pests like rats. You might see them around. Try not to let them into the house. If they do get in, just give them a nudge out the door.

## **Other items:**

Rooms have other amenities you might or might not need. These items include:

Ironing Board and Iron (upon request)

Hair dryer

Mini-fridge

Microwave

Coffee maker, cups, coffee, creamer, sugar

## **Availability:**

Josh is available and on premise most any time. He can be reached by call or text at 808-238-1191.

## **Check out procedure (by 11 a.m. unless late check-out is requested and available):**

- \* Place sheets and towels in a pile in bathroom.
- \* Take out trash and recyclables, rear of garage.
- \* Sign out of TV apps if you signed in using your account.
- \* Return the gate opener if provided, leave on table in room.
- \* Leave room key on your dresser.
- \* Notify us when you check-out by texting Josh 808-238-1191 .
- \* Please take the time to leave us a review within a few days. Thanks, we really appreciate this :)

# Hawaii Magic Skies Guest Book

## **How it all Started, Our Story**

### **Our Hawaiian Dream Vacation**

This adventure began when I retired from an IT career after 20 years of service with various government agencies. We raised 3 children, all grown and on their own. Our first trip to Hawaii was in 2019 for our 30th anniversary and also marked my retirement! This was a three week, three island tour. It was a dream vacation. Also, it was our first real vacation anywhere. We loved it so much we planned a second trip in early 2020 just to the Big Island. We arrived back home right before the pandemic hit.

### **The Pandemic**

It was like we were suddenly living in a different world. Lock downs, masks, and stagnation. Things weren't getting any better as spring turned into summer. We had previously made big travel plans in an RV for the summer. As a result of the pandemic, we were forced to cancel all of our plans. That summer we watched our world crumble in disbelief. We watched in shock as protests and riots started all over the country.

### **A Hawaiian Escape**

I saw a house come on the auction block on the Big Island that looked interesting. Maybe a chance to escape the madness. I started bidding. I was the only ones bidding except the bank so I won the bid. However, we had a friend take more pictures for us because we purchased the house relatively sight unseen. We started planning our trip out. We were ready for a new adventure.

### **Our New Hawaiian Adventure**

We came to the island, with our dog, in the middle of the Pandemic. This was no easy feat. No one was really travelling to Hawaii at that time. Every traveler was required to undergo a full 2-week quarantine. In Honolulu Airport there was a long line to register for quarantine, and they were still working out the kinks, so it was slow going. Then we had to get the dog from the agriculture office and get him onto the next plane to the Big Island. With little time in between flights, we almost missed the connecting flight.

### **Our Surprise Awaiting Us in Hawaii**

After a long trip, we arrived at the house. We were surprised to find out it was a three-story solid teak house! However, it was basically a shell, inside barely worked on and never finished. What was done was in bad disrepair. So, it was good and bad, bittersweet one might say.

# Hawaii Magic Skies Guest Book

## The Hawaii Project

We definitely had our work cut out for us on this one, but we were up for the challenge. We immediately worked on new plans. While we waited a year for new permits, we worked using the old permit. Now we are on our fourth year of having a full-time crew working on this project and we are finally open for business! It has been quite the project, a masterpiece handcrafted by local craftsmen! A lot of creativity, a lot of hard work, a lot of waiting and a lot of investing.

## The Big Reveal – Our Hawaii Magic Skies Farm Stay B&B

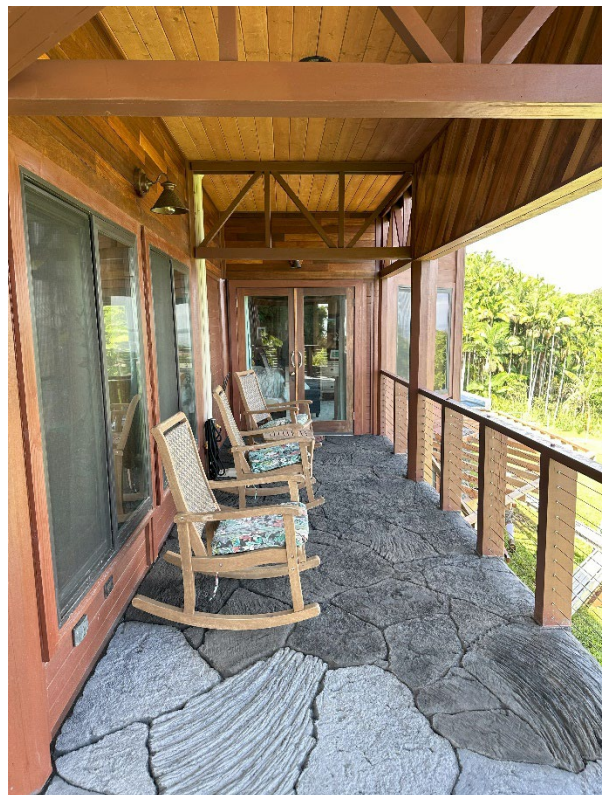
After a long, hard road, we are finally (mostly) done, and it is spectacular. We have finished the inside with exotic woods from the island, milled on property and at a local mill shop. There is artwork from many local artists throughout, including paintings from me and carvings from Kevin. We are so excited to share what we have created with the world! Welcome to our masterpiece!



**BEFORE**



**AFTER**



**BEFORE**



**AFTER**



BEFORE



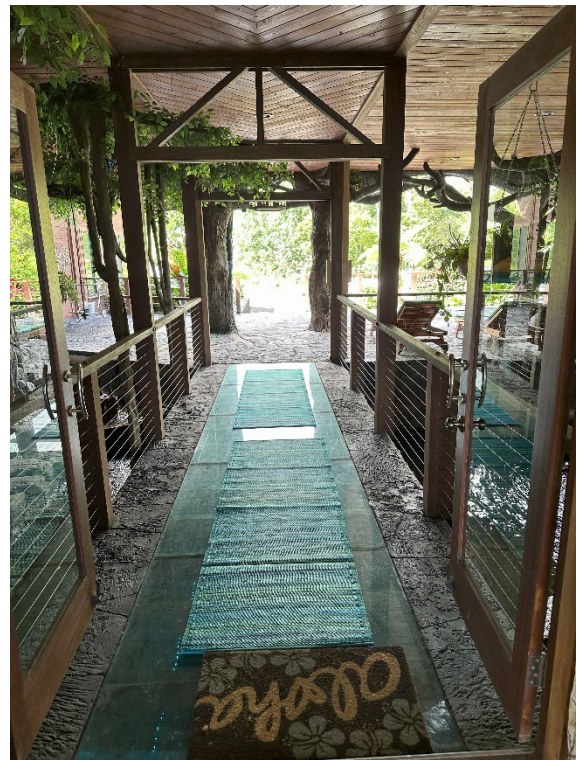
AFTER



**BEFORE**



**AFTER**





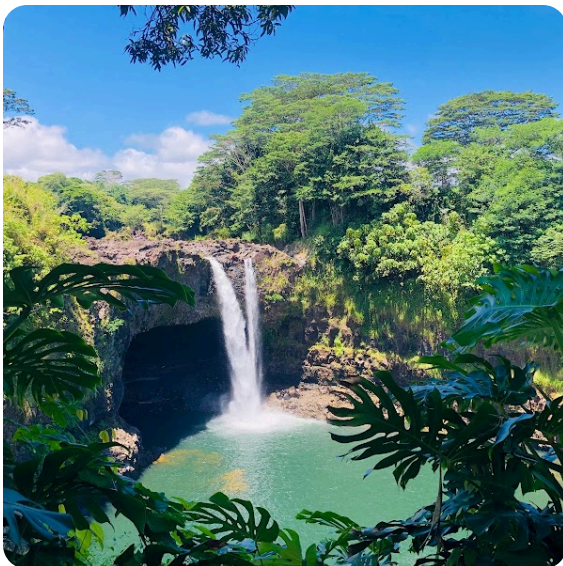
# Magic Skies Guidebook

## Sightseeing



### 'Akaka Falls

A beautiful waterfall and a wonderful short walk-through lush landscape. This is a "can't miss" that is only a few miles from our B&B.



### Rainbow Falls

337 locals recommend

Drive up to this impressive waterfall, named Rainbow Falls due to the frequent rainbows created in the spray. Only a few miles from our B&B.



## Liliuokalani Park and Gardens

189 Lihikai St

103 locals recommend

The largest authentic ornamental Japanese garden outside of Japan. Stroll through this amazing park that used to be a Japanese Village, wiped out by the 1960 Hurricane. Blink and you may think you're in Japan as you stroll through peaceful Lili'uokalani Gardens, named after Hawaii's last reigning monarch, Queen Lili'uokalani. This beautifully landscaped park features arching bridges over fishponds, rock gardens, pagodas, Japanese stone lanterns and a teahouse. Views of Hilo Bay and Mokuola (Coconut Island) enhance this peaceful setting.



## Isaac Hale Park

13-101 Kalapana - Kapoho Rd

101 locals recommend

Isaac Hale Beach Park;

Venture into another planet, with vast expanse of the 2018 lava flow in Kalapana where the lava met the ocean. The once popular beach park was destroyed by the lava, and is now a popular attraction. Seeing the lava is mind boggling, and active hot springs now surround the park. The drive there is beautiful through a lush jungle with farm stands and remote homesteads and then up and over the lava flow. An hour drive but well worth it!



## Carlsmith Beach Park

1815 Kalaniana'ole St

140 locals recommend

My favorite shore park with wonderful coves and tidepools where the turtle frequent!



## Richardson Ocean Park

2355 Kalanianaʻole St

176 locals recommend

Another great shore park that is known as the best snorkel spot on the island. Go snorkel here and see lots of fish and turtles!



## Kamehameha Statue

10 locals recommend

Near downtown bayfront, the tribute to King Kamehameha is a great photo opportunity!



## Honoli'i Beach Park

81 locals recommend

The best surf spot on the island, where all the locals surf. You can actually walk 30 minutes to this park from our B&B and 30 minutes back, its a beautiful walk on a very quiet road with lots of views, waterfalls, creeks, flowers and more.



## Waipio Valley Lookout

201 locals recommend

Located on the Hāmākua Coast, the sacred Waipi'o Valley was the boyhood home of King Kamehameha I, and an important center for political and religious life in Hawai'i. Not only is "The Valley of the Kings" an important site for Hawaiian history and culture, it's also a place of dramatic tropical beauty. This fertile valley is about one mile across and over five-miles deep, and surrounded by cliffs up to 2000-foot high. Waipi'o Valley was once the home of thousands of Native Hawaiians. Today, there are less than 100 residents living amongst the waterfalls, taro fields and rivers permeating the valley.

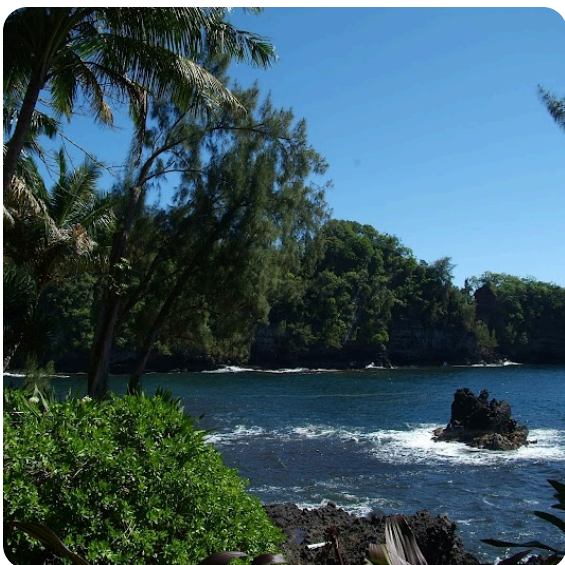


## South Point Park

South Point Road

74 locals recommend

South Point Park is the southernmost point of Hawaii and the southernmost point of the United States Territory. There are really few tourists, but the scenery is definitely not to be missed.

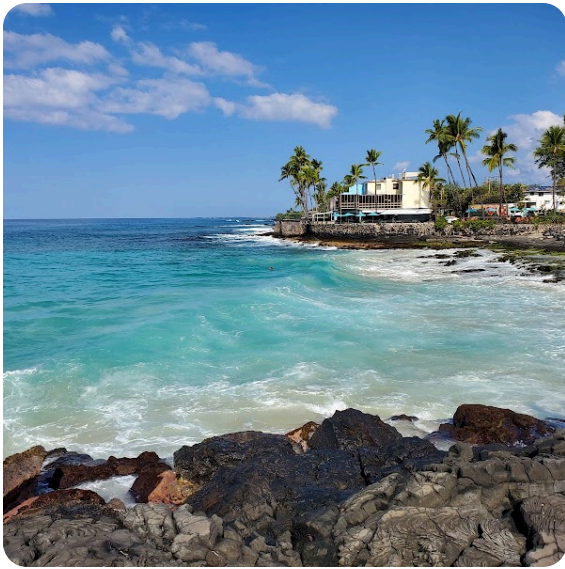


## Hawaii Tropical Botanical Garden

27-717 Mamalahoa Hwy

192 locals recommend

A nonprofit 17-acre botanical garden and nature preserve. Over a mile of trails lined with thousands of rare and endangered flora from all parts of the globe. It is a magical place where paths and bridges guide you over mountain-fed streams and waterfalls into awe-inspiring views. A must see.



## Magic Sands Beach Park

Ali'i Drive

181 locals recommend

If the weather is wet on the east side, take a 90 minute drive to the other side of the island in Kailua-Kona, where it's usually dry and sunny with wonderful sand beaches! Magic Sands is our favorite spot on the west side where the sand goes out with the tide and comes back with the tide like magic!



## Mauna Kea Observatory

Atop the island's highest mountain, leading scientists from around the world have been conducting crucial research into the stars. Mauna Kea is crowned with multinational research facilities and observatories, studying the origins of the universe, and tracking unknown objects in the night sky. On a still awe-inspiring, but smaller scale, the Mauna Kea stargazing tour provides visitors a once-in-a-lifetime opportunity to see the island and the night sky from an unreal vantage point.



## Hawaii Volcanoes National Park

880 locals recommend

Hawai'i Volcanoes National Park protects some of the most unique geological, biological, and cherished cultural landscapes in the world. Extending from sea level to 13,680 feet, the park encompasses the summits of two of the world's most active volcanoes - Kīlauea and Mauna Loa - and is a designated International Biosphere Reserve and UNESCO World Heritage Site. At its heart are the Kīlauea and Mauna Loa active volcanoes. The Crater Rim Drive passes steam vents and the Jaggar Museum, which features volcanology exhibits and a viewpoint overlooking Halema'uma'u Crater. Thick ferns mark the entrance to the Thurston Lava Tube (Nāhuku). The Chain of Craters Road weaves over lava. Trails crisscross the park. Kilauea has had active lava recently so you might get to see some lava!

## Food scene



### **Luquin's 454**

Best Mexican in Hilo!



### **Pineapples Restaurant**

332 Keawe St

128 locals recommend

Wonderful island food and great atmosphere with the open breeze dining! Get a drink in a full pineapple!



### **Moon and Turtle**

51 Kalakaua St

41 locals recommend

This exclusive place is very quaint and personable with amazing food and drinks! You need a reservation.



### **Ponds Hilo**

135 Kalaniana'ole St

42 locals recommend

Excellent food and drinks, great for a special occasion! View overlooking pond. Feed the ducks and fish!



### **The Seaside Restaurant And Aqua Farm**

1790 Kalaniana'ole St

34 locals recommend

Overlooking the water, this place has great ambiance, great food and drinks, a little tight quarters.



## Uncle Robert's Awa Bar and Farmers Market

12-5038 Kalapana Kapoho Beach Rd

171 locals recommend

Hippie hangout, food, music, vendors, shops, parties

---

## Essentials



## Safeway

381 E Maka'Ala St

67 locals recommend

Get whatever you need at a familiar store

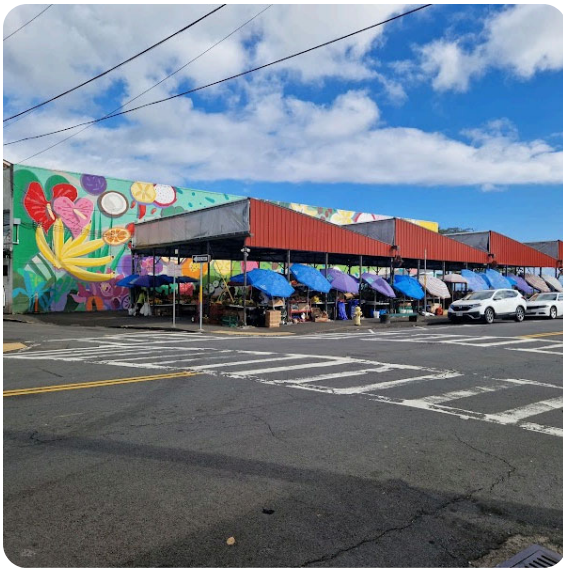


## Hilo KTA Super Stores

50 E Puainako St

88 locals recommend

A local grocery store, get awesome poke and more



## KTA Super Stores

321 Keawe St

21 locals recommend

A small downtown version of the local favorite grocery store



## Longs Drugs

555 Kilauea Ave

Convenient Longs CVS Drug Store 5 minutes away

# Nice Walk to Honoli'i Beach Park

Go down Woa Road, turn right on Kulana St, turn right on Kahoa St, follow all the way to the beach!



3.01mi Walk

Thursday, Oct 14 at 10:04 am

## SUMMARY

**3.01**

Distance  
(mi)

**1:19:15**

Duration

**26:21**

Avg Pace  
(min/mi)

**7.9K**

Steps

**476**

Calories

**234**

Elev Gain  
(ft)





## Honolii Orchards Farm Tour and Hawaiian Craft Chocolate Experience

1533 Puia Road Hilo Hawaii 96720 (Right up the street!)

Reservations Required • Ages 9+ \$100 each

**Mondays, Wednesdays, and Fridays: 10am-1:30pm**

Check Availability and book at <https://fareharbor.com/embeds/book/honoliiestate>



### Join us under the canopy!

As you journey to Honolii Orchards, you'll drive along some of the Big Island's scenic backroads, rarely explored by most visitors. Our family-owned farm is located just 5 minutes from Hilo, set amidst historic breadfruit, sugarcane, macadamia, and cattle land, 1.7 miles up Puia Road.

Upon arrival, you'll step into our elevated tasting room, perched above the orchard canopy, offering breathtaking ocean and valley views. We begin with some casual conversation so we have a chance to relax and chat before heading out to tour the orchards with Colin Hart, our master agronomist.

In the orchards, you'll explore the journey of the cacao tree—from cultivation to harvest—and discover how its precious fruits are transformed into the beloved treat we know as chocolate. We encourage curiosity, so feel free to ask any questions you may have! While here, we'll also delve into the broader agricultural history of the region, touching on the once-booming sugarcane industry that shaped the Hamakua Coast.

Following the orchard tour, Colin, whose master's work focused on cacao fermentation and drying, will guide you through the fascinating process of cacao fermentation. This is a unique opportunity to dive deep into the science of post-harvest processing, a critical step in producing high-quality craft chocolate.

Next, we'll return to the tasting room for an engaging exploration of chocolate's history, tracing its origins from ancient Mesoamerica to today's craft chocolate revolution. You'll also gain an understanding of the key differences between craft chocolate and mass-produced commodity chocolate.

We conclude the tour with an exceptional tasting of 10 single-origin craft chocolate bars, all sourced from various farms across the Hawaiian Archipelago. Through this tasting, you'll experience the incredible diversity of flavors that Hawaiian cacao offers. Like fine wine, craft chocolate reveals the profound influence of terroir—how genetics, soil, and climate combine to create distinct flavor profiles.

We like to think of Hawaii as the Napa Valley of craft chocolate, and by joining us, you'll become part of an exclusive group at the forefront of this growing industry. This experience will equip you with the knowledge to discuss cacao agriculture and chocolate's rich history with confidence, while also helping you refine your own unique flavor preferences.

In addition to the chocolate tasting, you'll also get to try fresh cacao juice, roasted cacao beans, chocolate-covered macadamias, cacao tea, and other seasonal fruits and farm-fresh treats.

After the tour, you'll have the opportunity to purchase any of the chocolates you tasted. You're also welcome to stay, relax in the tasting room, or take a leisurely walk through our beautiful orchards.

**WARNING:** We love to feed people chocolate, please be prepared to consume quite a lot of it during this tasting. If there's something you especially enjoy, we will happily give you more.

**NOTE:**

This tour is not suitable for children under the age of 9.

**Groups are limited to 14 people.**

Email Wrenn ([wrenn@honolii.estate](mailto:wrenn@honolii.estate)) to book custom tours for larger parties.

**Please bring:** Closed toed shoes, hat, sunglasses, sunscreen, rain coat, water bottle.

